

THE CHATTAHOOCHEE RIVERLANDS

DEMONSTRATION SITE:
PROCTOR CREEK TRAIL EXTENSION

PROCTOR CREEK TRAIL EXTENSION

CONNECTING COMMUNITIES TO THE CHATTAHOOCHEE

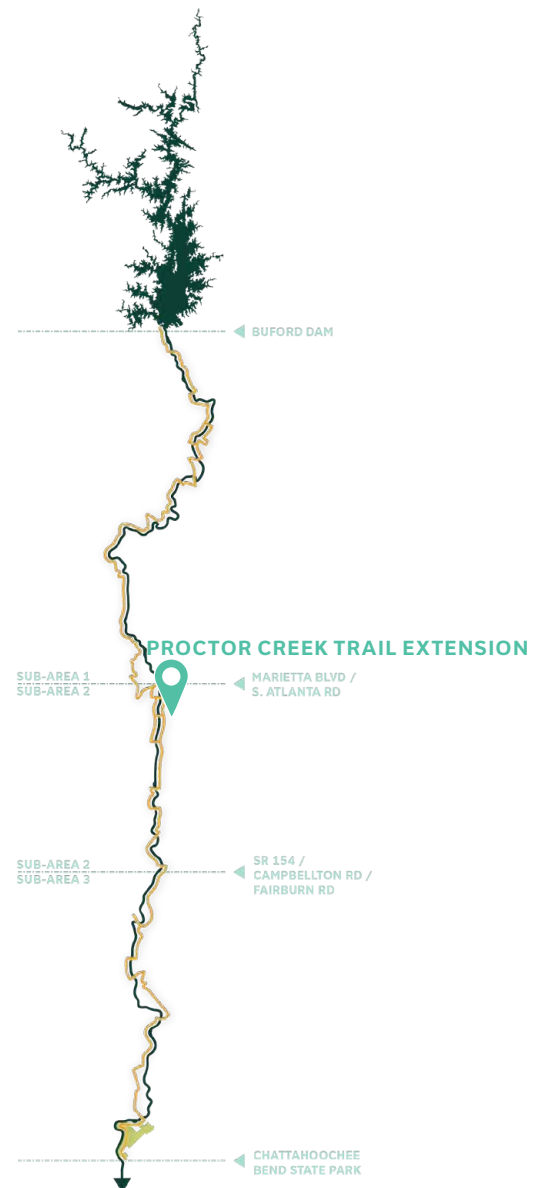
The extension of the Proctor Creek Trail to the Chattahoochee River represents an important opportunity to bring historically underserved communities to the River and provide amenities for community gatherings, ecological stewardship and environmental education. This site is also an opportunity for communities from Cobb County and Atlanta to share the River as common ground.

The site selected for the Proctor Creek Trail Extension is surrounded by industrial land uses including the former Chattahoochee Brick Site as a site of historical significance. The portion of this site bordering the Chattahoochee, including the mouth of Proctor Creek, is considered a sensitive ecological area that is subject to frequent flooding.

The design goals for the Proctor Creek Trail Extension represent a desire to extend the Proctor Creek Greenway to the Chattahoochee River in a way that protects ecologically sensitive areas while educating visitors about the importance of waterway health. In order to achieve this, the Design Team discussed potential site features including outdoor classrooms, overlooks and moments for historical interpretation, extensively with a committee of stakeholders.

Based on those conversations, the programmatic amenities reflected in the design for this site include:

- An Interpretive Pavilion with amenities geared specifically toward environmental education and inspiring stewardship of the creek
- An interpretive historical walk to recognize the stories of the Chattahoochee Brick site as the creek passes along the property edges
- A new dedicated bridge for walking and biking across the Chattahoochee, that provides connectivity between Cobb County and the City of Atlanta
- Pedestrian paths and dedicated spaces along the River to observe seasonal changes to the natural context





Aerial View Of The Proctor Creek Demonstration Site With I-285 Running Along The Site's Western Edge



View Of Proctor Creek From The Sewer Easement

A CLOSER LOOK AT THE CHATTAHOOCHEE BRICK COMPANY

On the banks of the Chattahoochee River, a short walk north of where Proctor Creek tucks under I-285, lies the site of the recently abandoned factory of the Chattahoochee Brick Company. Now a brownfield full of brick shards, cement slaps, and wild re-growth, the site is poised for redevelopment but haunted by an ugly past. The Chattahoochee Brick Company had, until the 1920s, a history of using Leased Convict Labor, paying the State of Georgia for mostly African-American convicts, who produced thousands of hand-made bricks a day under brutal work conditions with high mortality rates.

The company was purchased in 1878 by Captain James English, who owned a conglomerate of construction businesses all built on convict labor. After becoming Mayor of Atlanta in 1881, Captain English mandated that all city streets be paved with brick, and as police commissioner, he was able to control the source of labor at virtually no cost for enterprises like his own. Recently, the descendants of Avery Bate (1857 – 1887), a man who may have worked at the factory, placed a grave marker at his burial site after they connected with Richard Becherer and with Pulitzer Prize winning author of “Slavery By Another Name” Douglas Blackmon.

While the future of the site is unclear, residents of the area hope that part of it will become a space to reflect and honor those that lost their lives working at the factory. The Proctor Creek Greenway Extension Demonstration Site includes an interpretive historical walk to recognize their stories as the creek passes along the property edges. The Chattahoochee Brick site represents a great opportunity for a future park space along the River’s edge for Atlantans and RiverLands users alike.





PROCTOR CREEK TRAIL EXTENSION

PROGRAMMATIC ZONING

THIS ILLUSTRATION DOES NOT CONSTITUTE A DESIGN PROPOSAL NOR SHOULD IT SET ANY EXPECTATION FOR IMPLEMENTATION

SMYRNA

KAYAK REST AREA

RIVER OVERLOOK

NEW BRIDGE

OVERLOOK

WETLAND WINDOW

GROUP SEATING

ATLANTA INDUSTRIAL PARK

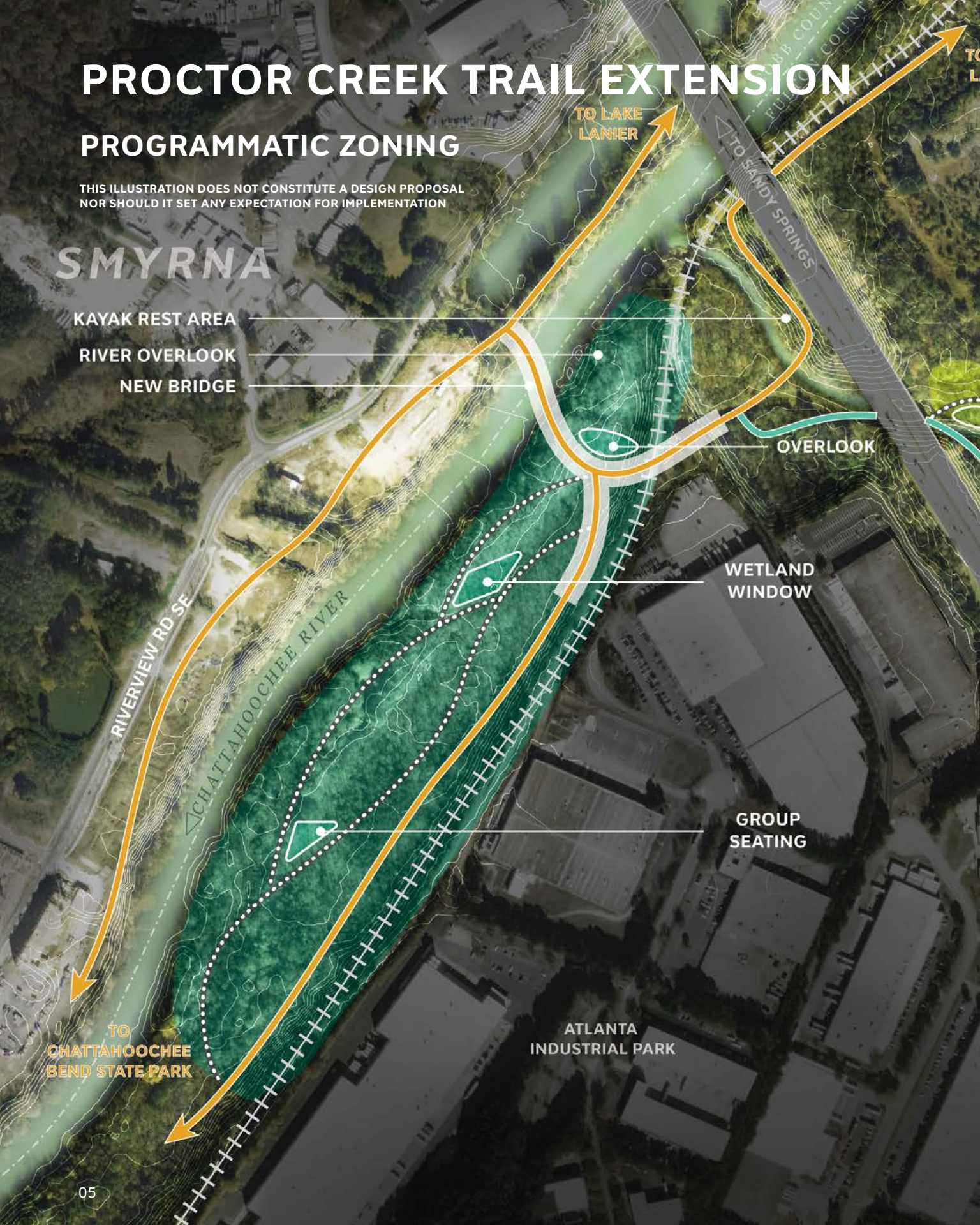
TO CHATTAHOOCHEE BEND STATE PARK

TO LAKE LANIER

TO SANDY SPRINGS

RIVERVIEW RD SE

CHATTAHOOCHEE RIVER



D LAKE
ANIER

FORMER
CHATTAHOOCHEE
BRICK COMPANY

HISTORIC
INTERPRETIVE WALK

TO WHITTIER
MILL PARK

PARROT AVE

BOLTON RD NW

I-285

PROCTOR CREEK

INTERPRETIVE PAVILION
OUTDOOR CLASSROOM

ATLANTA

TO ATLANTA HARTSFIELD JACKSON INTL AIRPORT

TO PROCTOR CREEK
GREENWAY / BANK-
HEAD MARTA STATION

LILLIAN COOPER
SHEPERD PARK



PROCTOR CREEK TRAIL EXTENSION

ATLANTA



BANKHEAD MARTA STATION

WESTSIDE
RESERVOIR PARK

PROCTOR CREEK GREENWAY

HISTORICAL /
INTERPRETIVE WALK



INTERPRETIVE PAVILION

TO WHITTIER MILL PARK

FORMER
CHATTAHOOCHEE
BRICK COMPANY

KAYAK REST AREA

TO BUFORD DAM

I-285

TO BUFORD DAM

THIS ILLUSTRATION DOES NOT CONSTITUTE A
DESIGN PROPOSAL NOR SHOULD IT SET ANY
EXPECTATION FOR IMPLEMENTATION



ATLANTA
INDUSTRIAL PARK

TO CHATTAHOOCHEE
BEND STATE PARK

OVERLOOK

WETLAND
WINDOW

NEW BRIDGE

OUTDOOR
CLASSROOM

RIVER OVERLOOK

FULTON COUNTY
COBB COUNTY

CHATTAHOOCHEE RIVER

TO CHATTAHOOCHEE
BEND STATE PARK

PROCTOR CREEK TRAIL EXTENSION

FOSTERING STEWARDSHIP AND HANDS-ON LEARNING

The new Interpretive Pavilion proposed for the edge of Proctor Creek is envisioned as a space that will accommodate a wide range of community-oriented activities. Not only will there be ample space for gatherings of various sizes, but both passive and active recreation will be proposed. The ongoing improvement of the tributary's health is also a major concern, as it relates to the health of the Chattahoochee and surrounding communities. Rather than constrain and control the banks of Proctor Creek with hard and static infrastructure, softer edges will allow the creek to respond to seasonal hydrologic flows and storm events.

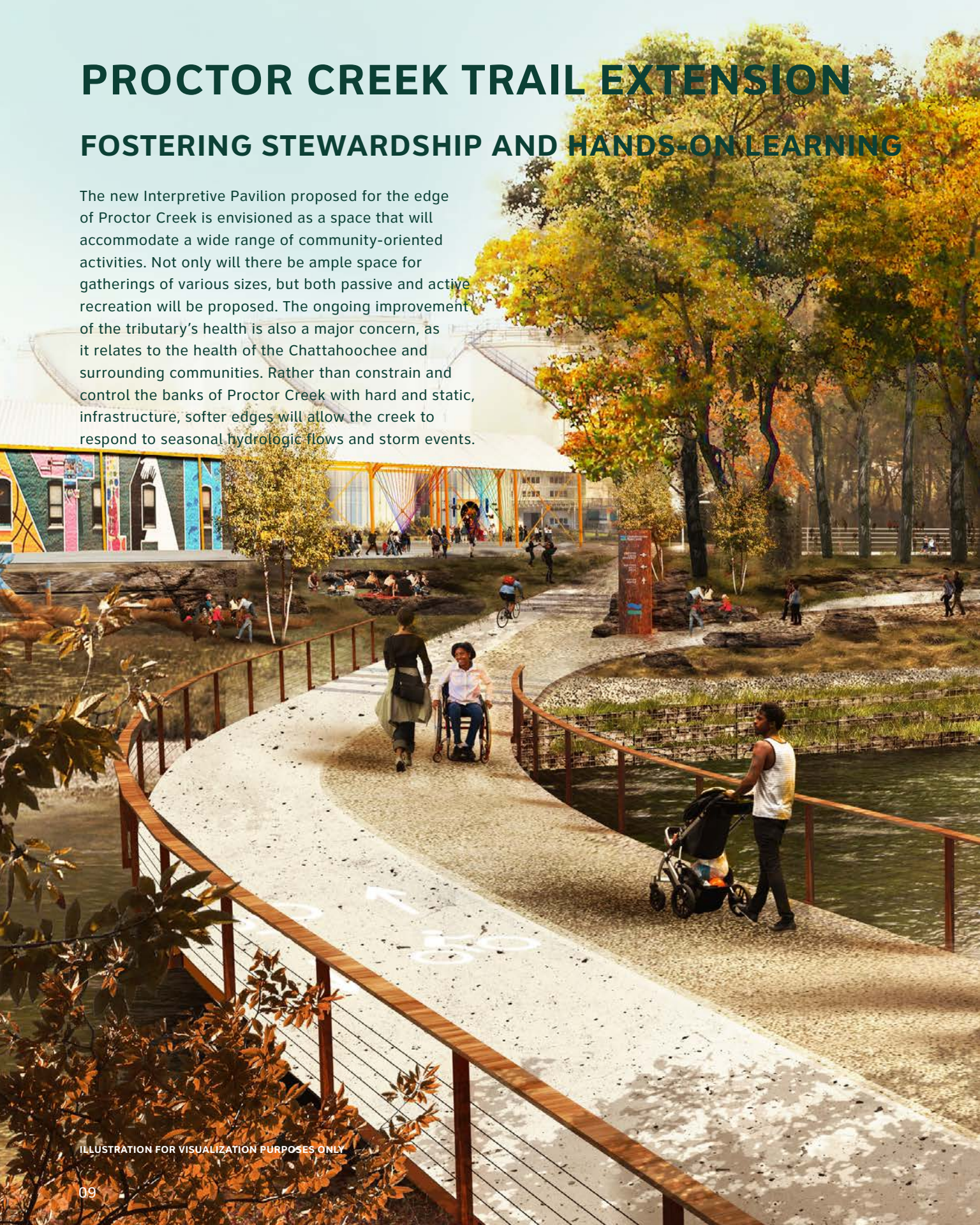


ILLUSTRATION FOR VISUALIZATION PURPOSES ONLY





For more information and to get involved:

WWW.CHATTAHOOCHEERIVERLANDS.COM

